

36th & Portland Center

3601- 3627 N Portland Ave, Oklahoma City, OK 73112



RETAIL SPACE NOW AVAILABLE

Available SF: 750 SF-1,000 SF-1,500 SF-2,000 SF

Lease Rate - Suites 3607/3609: \$1,400.00 per month

Suites 3615/3617: \$1,800.00 per month

Suites 3607/3609 Can Be Divided

Suites 3615/3617 Can Be Divided

Suite 3607 - \$700.00 Per Month 750 SF

Suite 3609 - \$700.00 Per Month 750 SF

Suite 3615 - \$900.00 Per Month 1,000 SF

Suite 3617 - \$900.00 Per Month 1,000 SF

Lot Size: 0.97 Acres

Building Size: 12,800 SF

Sub Market: Northwest

Well located strip center on the southwest corner of NW 36th St & N Portland Ave, just west of I-44.

Tenants include Richard Murphy CPA, Dreamland Sleep Center, Impressions Salon, Professional TV Repair, Mama Z's African Supermarket, Barbara's Apparel and others.

Nearby tenants include McDonalds, Carl's Jr, AAA Insurance & Travel and SuperCuts.

091317

FOR MORE INFORMATION, CONTACT

Susan Brinkley

sbrinkley@priceedwards.com

405.239.1244

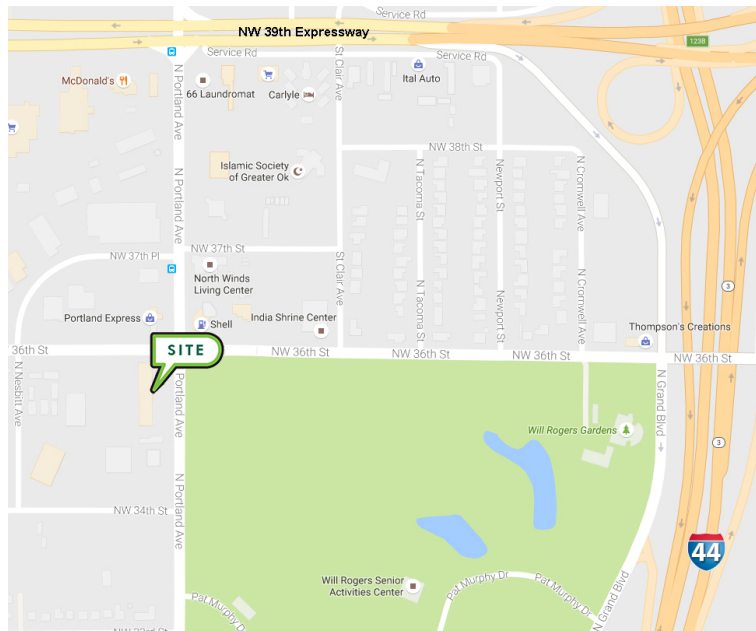
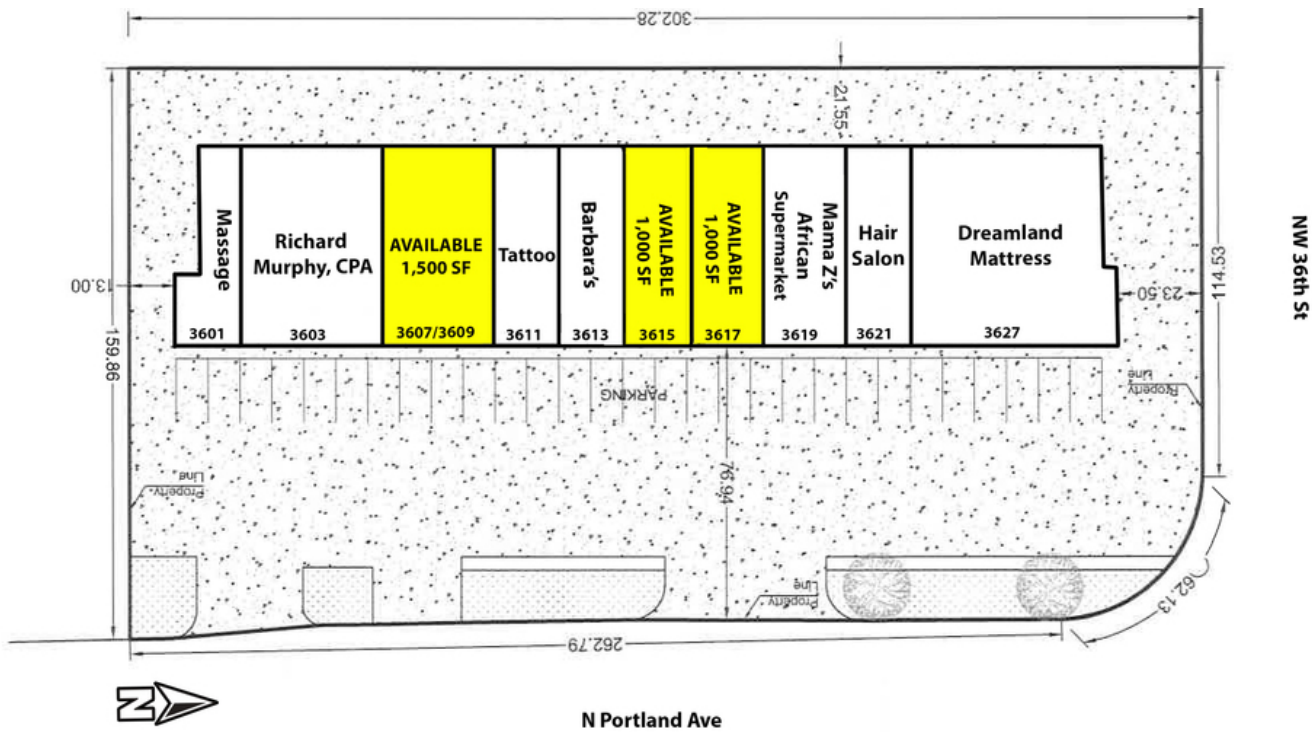
210 Park Ave, Suite 700

Oklahoma City, OK 73102

www.priceedwards.com

36th & Portland Center

3601 - 3627 N Portland Ave, Oklahoma City, OK 73112



DEMOGRAPHICS (per 2010 Census; 5 Miles Radius)

Total Population	227,531
Population Density	227,531
Median Age	35.1
Median Age (Male)	34.5
Median Age (Female)	35.7
Total Households	95,651
# of Persons Per HH	2.4
Average HH Income	\$56,129
Average House Value	\$159,795

TRAFFIC COUNTS (per ACOG)

N Portland	north	11,400
N Portland	south	12,302
NW 36th	east	14,812
NW 36th	west	14,777